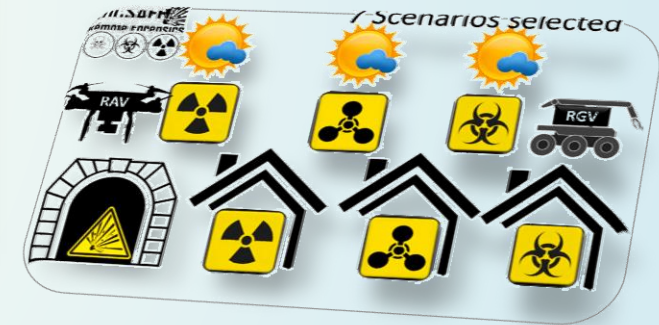




Remotely Operated CBRNe Scene Assessment & Forensic Examination



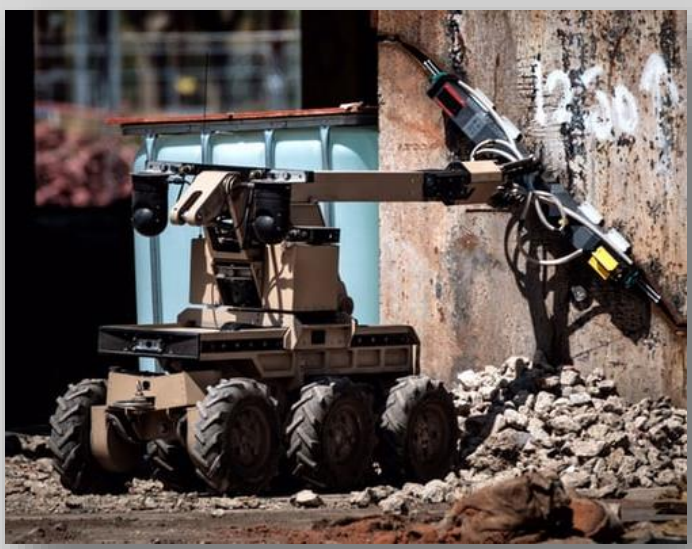
CoU Workshop Brussels, 03.12.2018

Dr. Claudia Gärtner

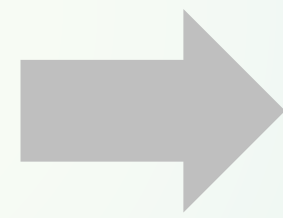
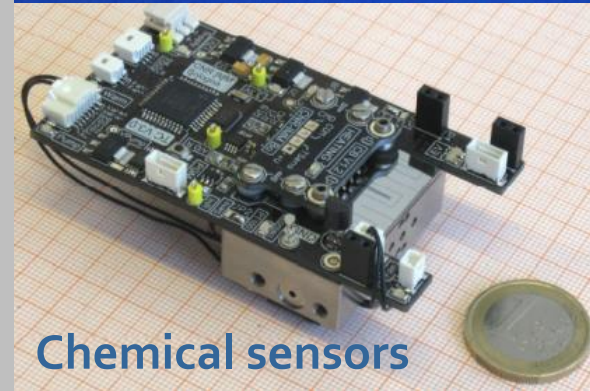
microfluidic ChipShop GmbH Jena; Germany

www.microfluidic-ChipShop.com

Remote data acquisition



Data generation



CDM – Central Decision Management



- Database
- GUI
- Decision Support
- SOPs
- Scene commander



ROCSAFE Consortium



External Advisory Board: University of Dundee; Cristanini SpA; Spanish Army; Netherlands Forensic Institute; DSTL; SceneSafe; PSNI; D. S. T. Lab.; Université Catholique de Louvain

We continue to develop links with broader group of stakeholders who are interested in the outputs of ROCSAFE and can provide inputs on request