

Resilience management guidelines and Operationalization applied to Urban Transport Environment

www.resolute-eu.org

Emanuele Bellini, emanuele.bellini@unifi.it

Paolo Nesi, paolo.nesi@unifi.it

University of Florence

CoU 2018



Co-ordinated by





Main Outcomes

- **European Resilience Management Guidelines** – (guidelines) – consensus driven approach improve guidelines acceptability at EU level
 - general version, and UTS version
 - <http://www.resolute-eu.org/index.php/deliverables>
- **CRAMSS** – (tools and algorithms) – ontology based static and dynamic CI data integration, processing and analysing platform
- **Mobile Emergency app** – (tools and procedures) – supporting users in their local decision before (early warnings), during and after an event
- **Game based training app** – (tools and procedures) – improving the current preparedness of the citizen in order to increase the community self-resilience

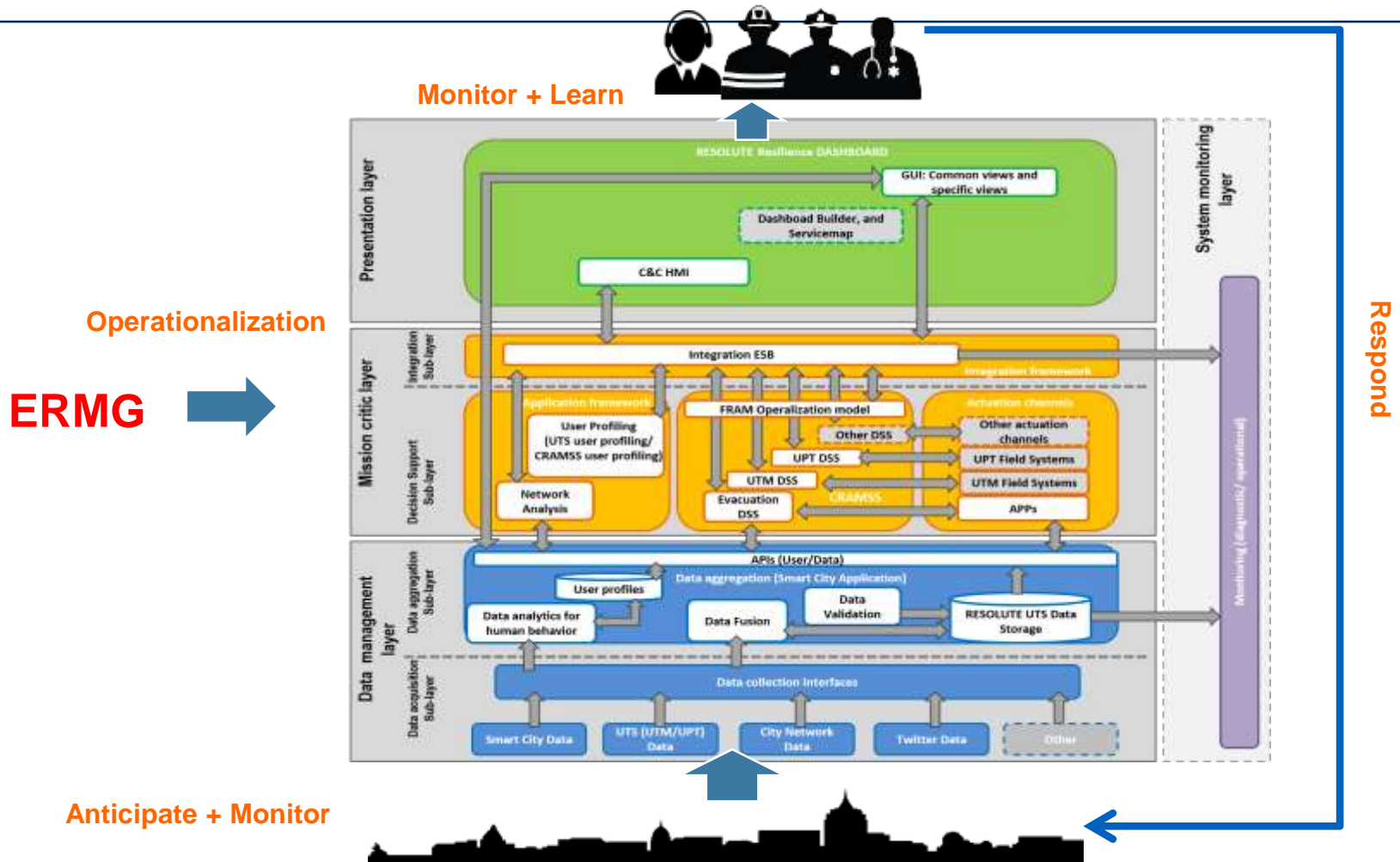


Paolo Nesi, Emanuele Bellini, UNIFI
Beijing 2017





RESOLUTE platform



Paolo Nesi, Emanuele Bellini, UNIFI
Beijing 2017



Resilience Dashboard



- ANTICIPATE: Visualize resilience strategies and conditions
- MONITOR: Merge information from all connected DSSs, sensors, databases. See the whole picture.
- RESPOND: Show resources
- LEARN: Understand what happened.

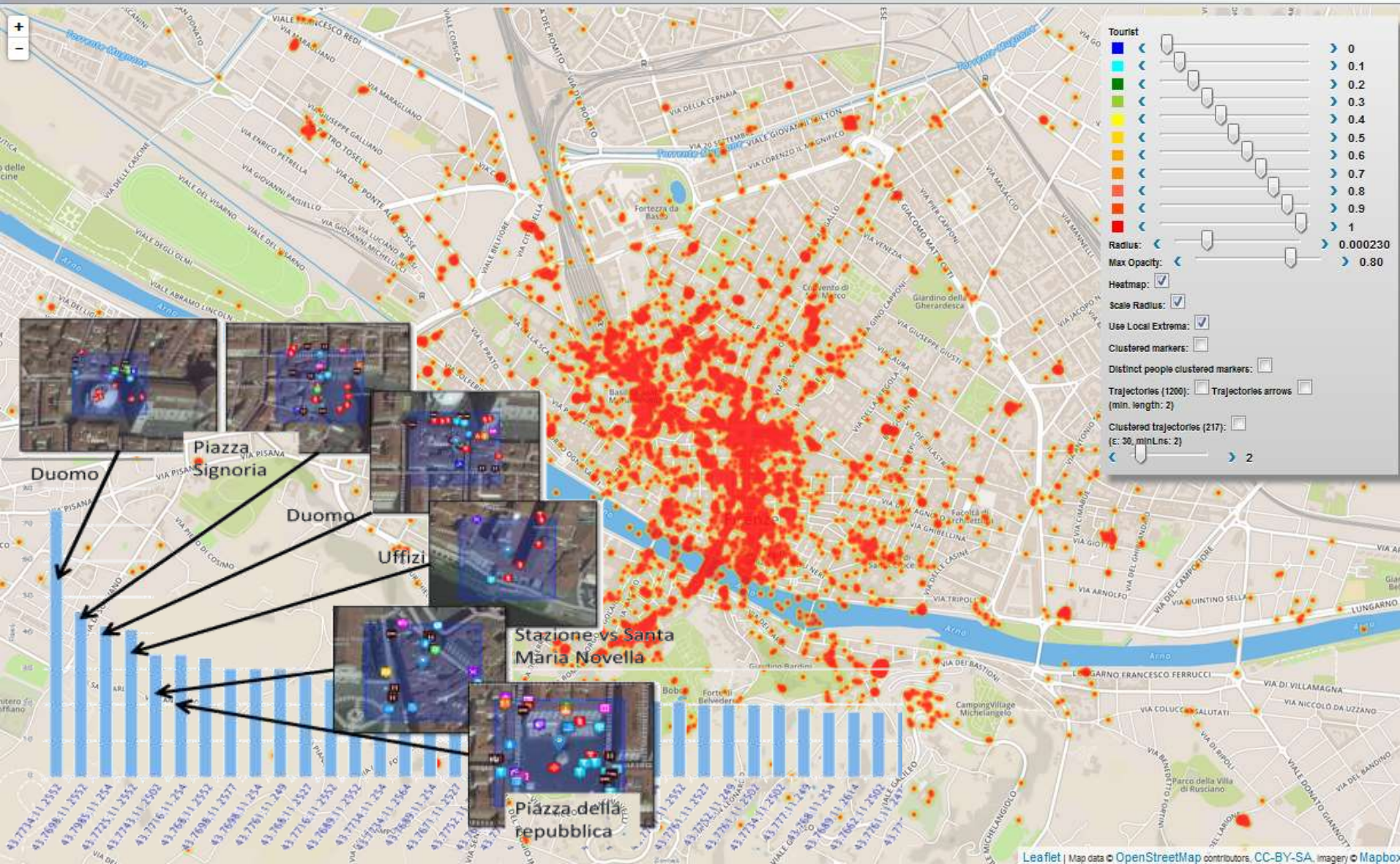
User Behavior Analyzer



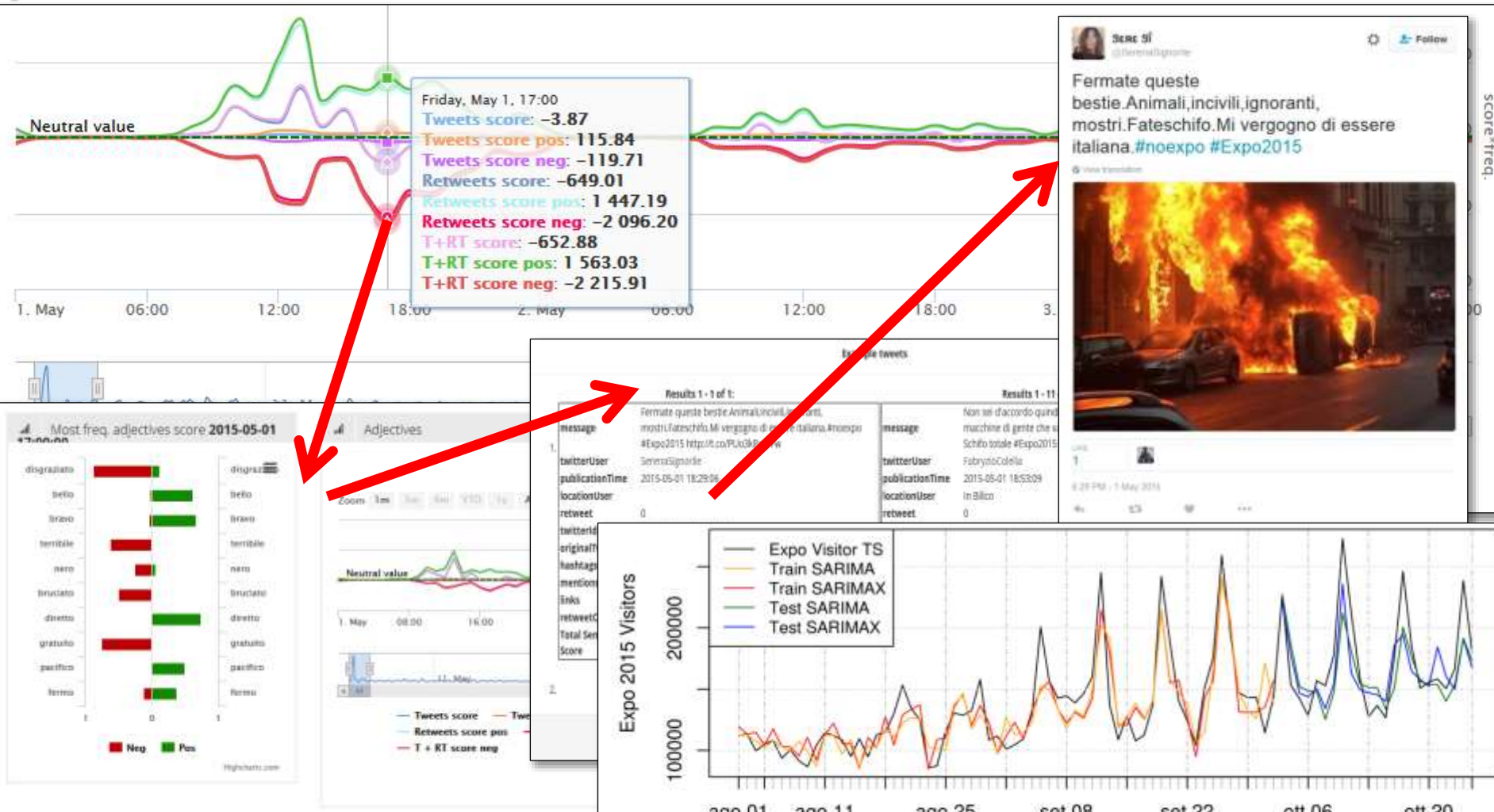
Co-funded by the European Union under H2020 DRS' 07-2014



Personal Recommender
DISIT - Distributed Systems and Internet Technology Lab



Twitter Vigilance, Sentiment Analysis, Monitoring and prediction



Paolo Nesi, Em
Beijing 2017



Figure 5: Comparison among the selected predictive models discussed and presented in Tables 2 and 3 with respect to the real number of visitors. Both training and validation periods are reported.



Evacuation DSS - Evacuation Manager Module

3 modes for evacuation routing planning supported:

- 1. Group-wise** evacuation (regards big groups of people)
 - Vehicles evacuation (respects the direction of the roads)
 - General public (pedestrians)
- 2. Personalized** evacuation (regards the vulnerable people)
 - Route selection according to the type of the road and the disabilities of the user
- 3. Collaborative** rescue action planning
 - Role assignment (rescuers, to-be-rescued)
 - Guidance of rescuers to the trapped/injured citizens



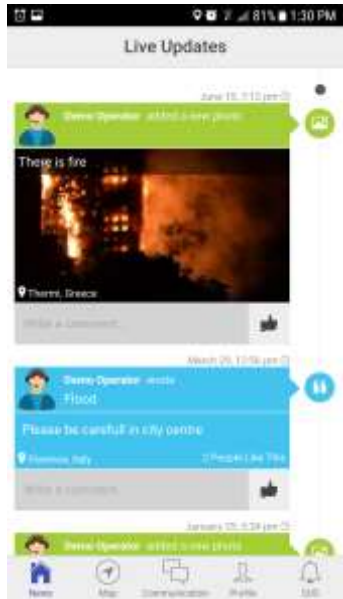
Paolo Nesi, Emanuele Bellini, UNIFI
Beijing 2017





Emergency Support smart mobile app

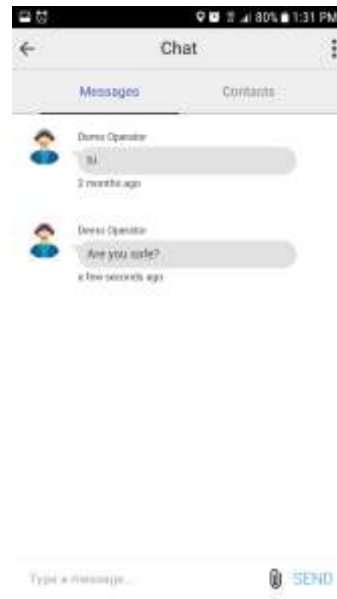
User Interface (1/3) "Main Views"



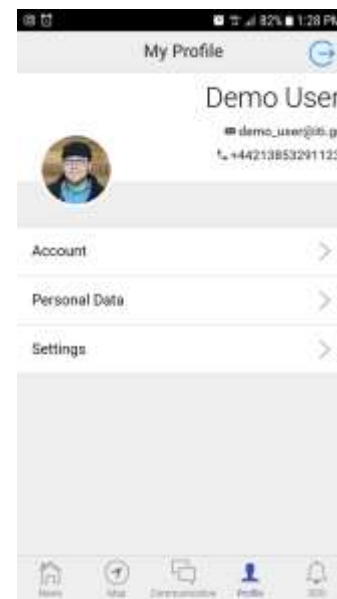
News



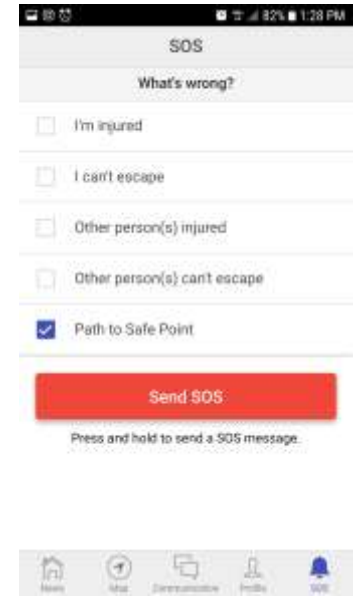
Map



Chat



Profile



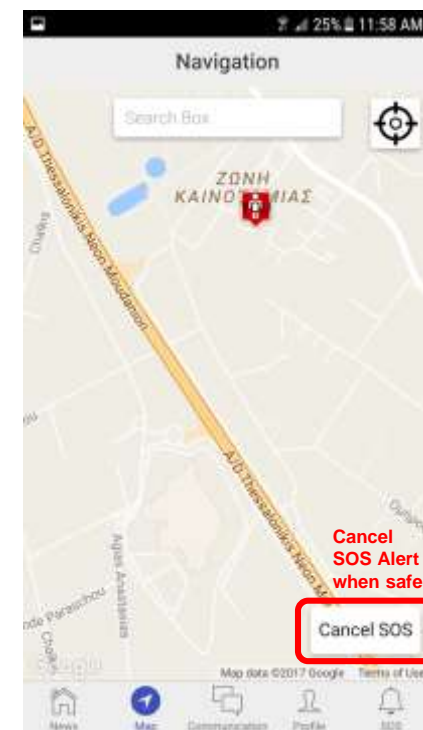
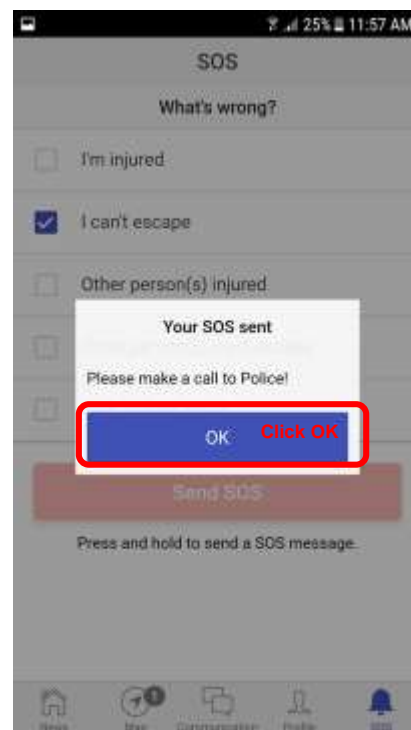
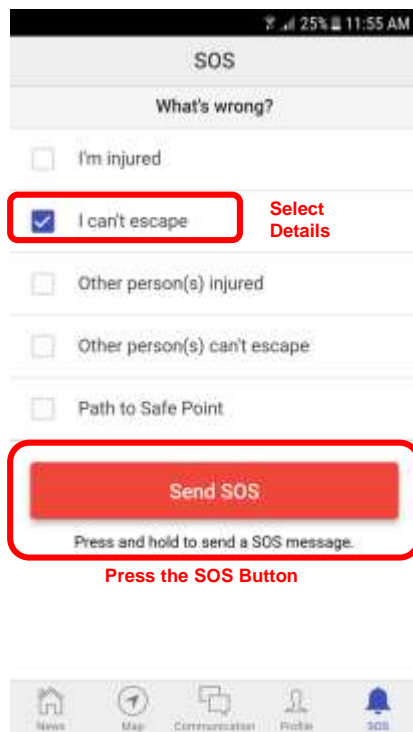
SOS



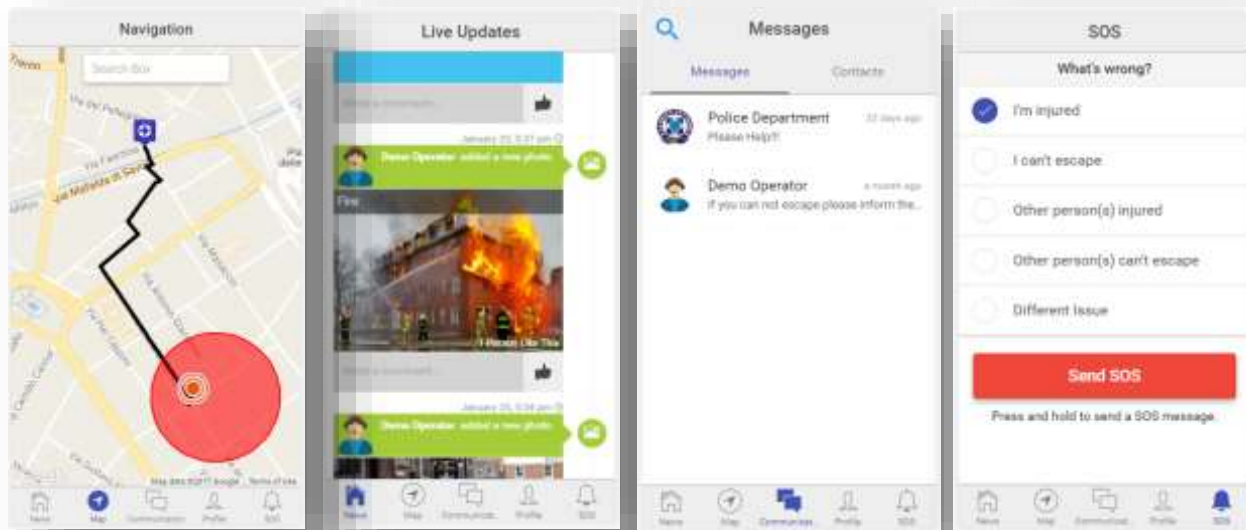
Paolo Nesi, Emanuele Bellini, UNIFI
Beijing 2017



User Interface (2/3) “SOS Alert”



Safe route calculation



- **ANTICIPATE:** (alternative routing to avoid critical masses)
- **MONITOR:** send position data to eDSS
- **RESPOND:** Self-rescue / rescue others.
- **LEARN:** -

